

Chemical dosing system

CDS-W



The chemical dosing system CDS-W supplies continues batch washers as well as washer extractors with liquid chemicals.

The wash machines are being supplied fully automatic, meaning that the required chemicals are requested by an electrical signal, so that the chemical dosing system then measures fast and accurately the required amount of chemicals and transfers them by water injection to the machine requesting the chemicals.

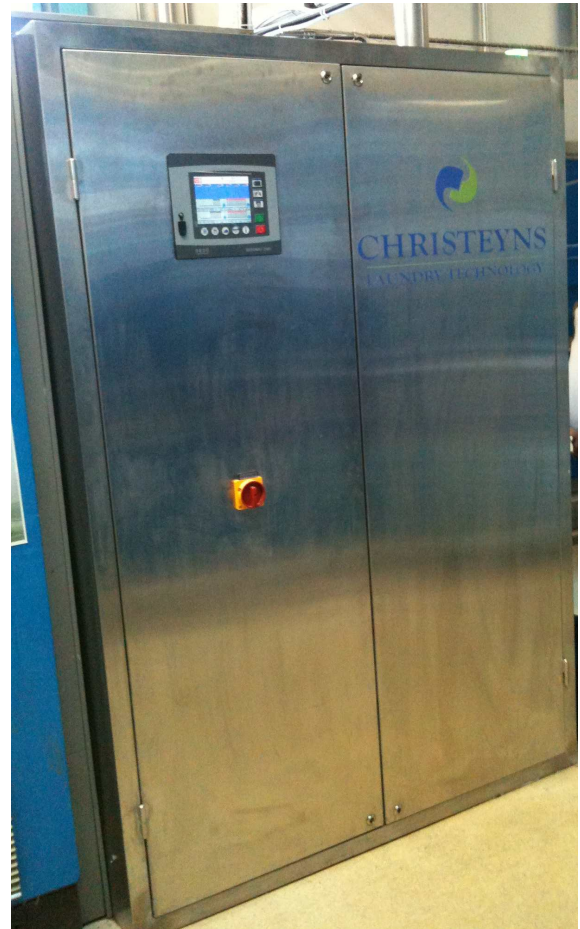
A system consist of:

- Stainless steel cabinet containing the measuring unit and the controller.
- Diaphragm pumps for efficient delivery of the chemicals
- Flow meters for accurate measurement of the chemical amount to be delivered.
- Pneumatically actuated process valves
- „Touchscreen“ controller to supervise and control the process of dosing and delivery.

The chemical dosing system CDS-W is a modular system and can, depending on its configuration supply up to 2 continues batch washers or 18 washer extractors. Many different combinations such as one continues batch washer plus 9 washer extractors can be done with one system only.

The smallest version can be used to supply one continues batch washer or 6 washer extractors. Such a system can later still be extended by adding modular components.

The controller can be adapted easily to the specific requirement of the laundry. Daily, weekly, monthly as well as yearly consumption data can be viewed on the controller. Further on the screen is shown, which valves are open and which amount of chemical is being sent to which machine.



All components (valves, flow meters and hoses) are designed for low contamination so that they are quickly washed out. Comparing to systems with peristaltic pumps maintenance work and therefore cost of maintenance can be greatly reduced. Further a calibration of the system is not required.

Specifikation:

Width:	1450 mm
Height:	2000 mm
Depth:	480 mm (plus space for the hose from the drums and going to the machines)
Time:	10 Chemicals of 30 gr to 1200 gr: approx. 1.5 min.
Chemical density:	0.7 - 1.5 kg per Liter

Chemical dosing system CDS-W

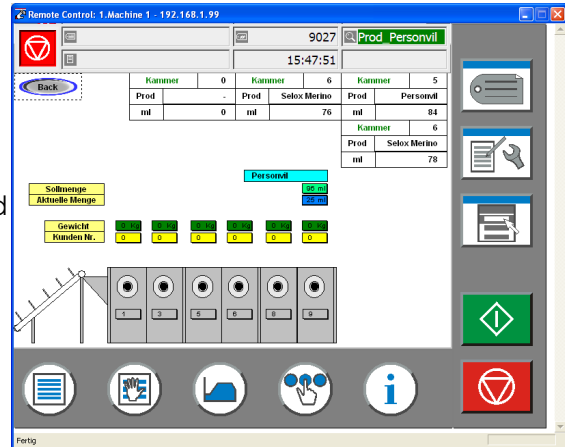


Process visualization

The fully automatic microprocessor controller has a 6.4" TFT screen including process visualization. The industrial control further includes a „Touchscreen“ and is therefore easy to use and to configure.

The whole process is visualized. This means that on the screen it is shown, which chemicals are currently dosed and which chemicals are pending in the queue and therefore being transferred next.

Important consumption data, such as daily, weekly, monthly but also yearly consumption of liquid but also powder chemicals are being recorded and can be viewed on the control.



The signals of the continuous batch washer and the wash extractors are connected over the Profibus modules. These signals can be interpreted as Relais or Relais enhanced. Therefore also older wash extractors can be connected too.

The controller can be connected to a local area network (LAN) so that the controller can be supervised from a standard PC. Further external access and diagnosis is possible so that corrections can be made remotely.

Extended data acquisition:

To store all process data over a long time frame, the controller can be connected over the local area network (LAN) to the internet. The data can then be stored externally. Each single dosing or alarm can be viewed even years after.

CHRISTEYNS LAUNDRY TECHNOLOGY

Home TWA1 TWA2 WSM1 WSM2 WSM3 WSM4 WSM5 WSM6 WSM7 WSM8 WSM9 Alarme Verbräuche Daten

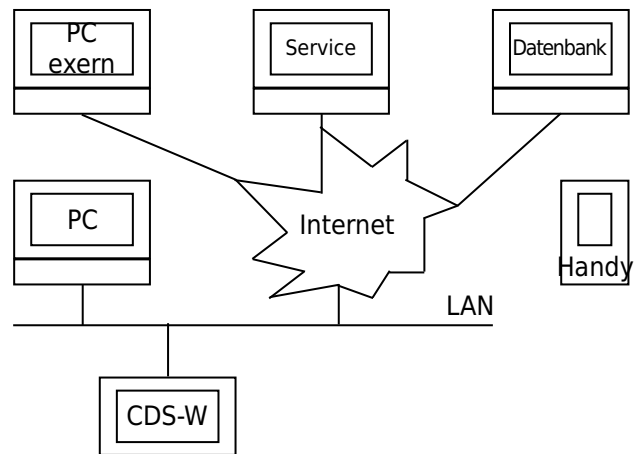
Verbräuche: Aktuelles Jahr

Nr	Produkt	Jan	Feb	März	April	Mai	Juni	Juli	August	Sept	Okt	Nov	Dez	Jahr
2	Mulan Citro	0	0	9	36	8	0	0	0	0	0	0	0	54
9	Osmafin App	0	0	0	61	266	65	0	0	0	0	0	0	391
23	Aquadiv	0	0	0	13	37	7	0	0	0	0	0	0	57
34	Select Dete	0	0	0	130	484	121	0	0	0	0	0	0	736
37	Bisofit Duo	0	0	0	10	3	1	0	0	0	0	0	0	14
38	Selox Micra	0	0	0	0	2	45	0	0	0	0	0	0	48
39	Peracid for	0	0	0	0	3	30	0	0	0	0	0	0	34
40	Chlor	0	0	0	58	247	66	0	0	0	0	0	0	371
41	Neutrabest	0	0	0	153	494	161	0	0	0	0	0	0	808
42	Lunocid	0	0	0	254	912	263	0	0	0	0	0	0	1429
101	Pulver01	0	0	0	0	0	182	0	0	0	0	0	0	182

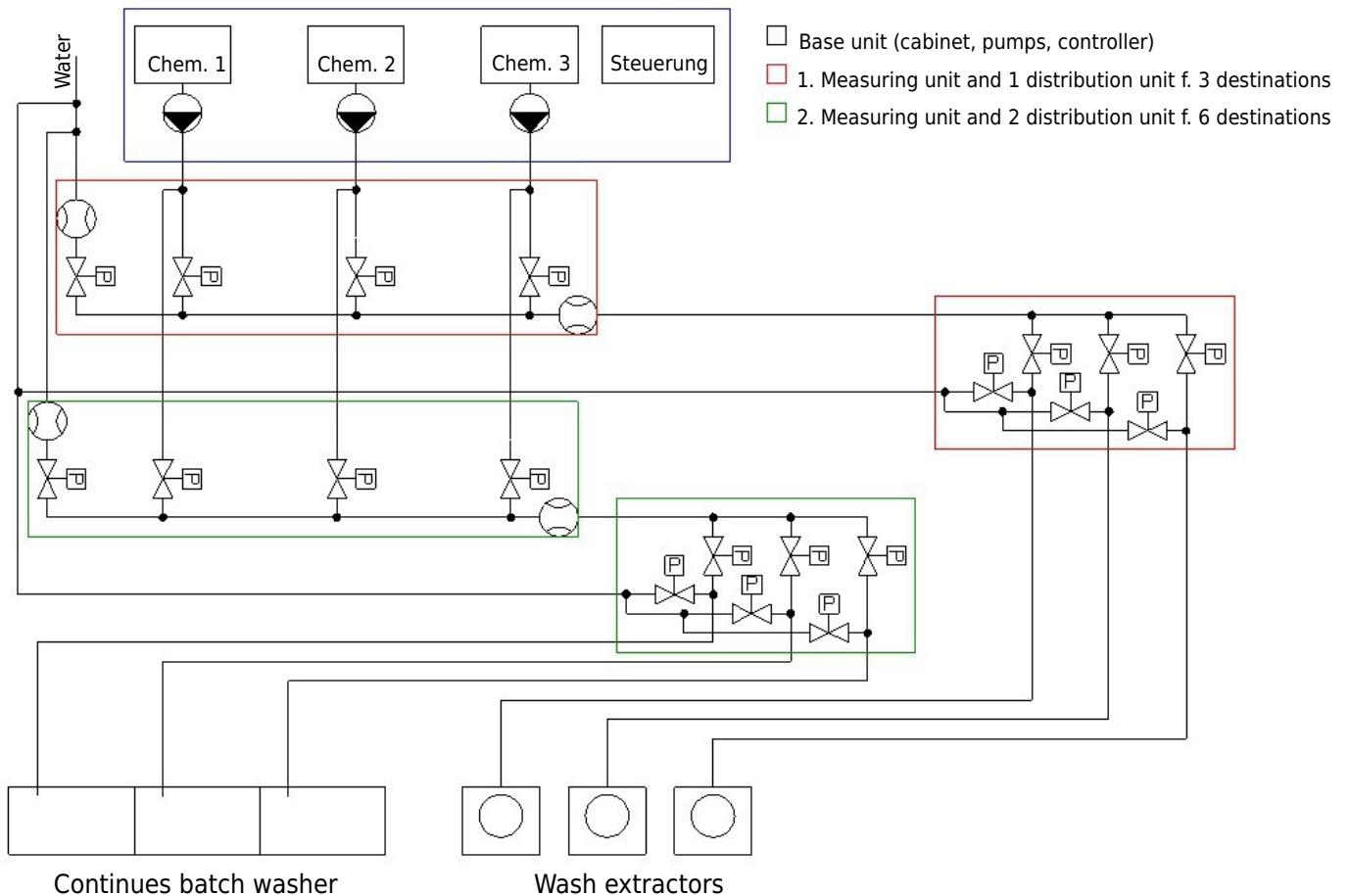
Chemical dosing system CDS-W



Moreover, such a systems allows that our technician can access the database for periodical checking and troubleshooting.



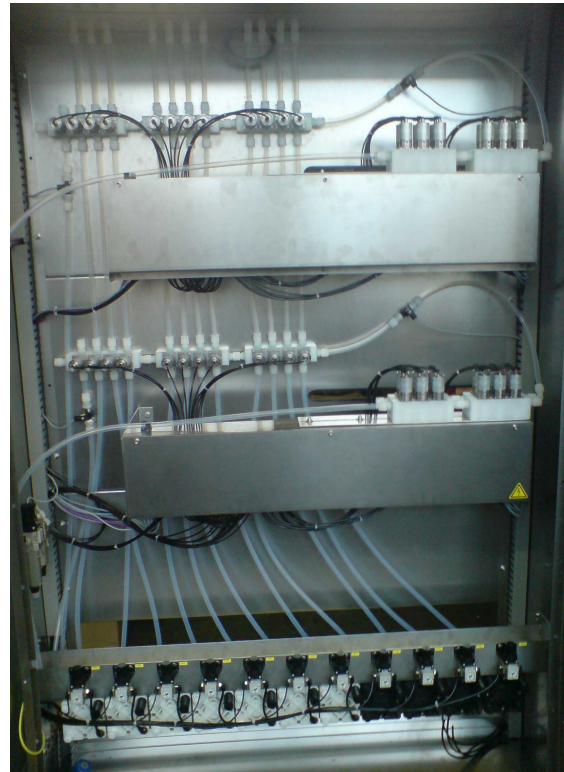
Schematic:



Chemical dosing system CDS-W



Installation: One continues batch washer and 4 wash extractors



Installation: Two continues batch washer and 4 wash extractors

